


"paws Above the Rest"



Rim of the World  
COMFORT PETS

A partnership with Classic Images in Crestline

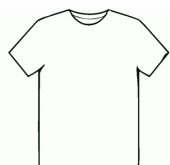
# TEAM WEAR

Look Paw-rific in your Rim of the World Comfort Pets TEAM  WEAR. Design your own wear by selecting your items, colors, and embroidery. All items are custom embroidered by our partner—Classic Images in Crestline. **Call Mary today to place your order—(909) 338-2281.**

## DESIGN YOUR WEAR

CA tax to be applied

### Pick Your Item



### Pick Your Color



Navy



Red



White



Grey

Color choices may vary by item

### Pick Your Embroidery



**Front-\$7.40**  
for left corner



**Back-\$11.80**  
for jackets/vests



**Pet's Name-\$6.00**  
small—for collars

## LPC61 Port & Company—Ladies Essential Tee

Prices are for the sizes shown—  
larger sizes are available for  
an added cost



**Price: 5.18 + embroidery** [catalog](#)

Sizes: XS-XL

A year-round essential, our best-selling t-shirt has been voted "most popular" by groups, teams, clubs and schools across America.

- 6.1-ounce, 100% soft spun cotton
- 98/2 cotton/poly (Ash)
- 90/10 cotton/poly (Athletic Heather)

## PC61 Port & Company—Men's Essential Tee



**Price: \$5.96 + embroidery** [catalog](#)

Sizes: S-XL

A year-round essential, our best-selling t-shirt has been voted "most popular" by groups, teams, clubs and schools across America.

- 6.1-ounce, 100% soft spun cotton
- 98/2 cotton/poly (Ash)
- 90/10 cotton/poly (Athletic Heather)
- 50/50 cotton/poly (Dark Heather Grey)

## L420 Port Authority Ladies Heavyweight Cotton Pique Polo



**Price: \$19.98 + embroidery** [catalog](#)

Sizes: XS-XL

A favorite year after year, these polos are known for their exceptional range of colors, styles and sizes. The soft pique knit is shrink-resistant and easy to care for, so your group will always look its best.

- 7-ounce, 100% ring spun combed cotton heavyweight pique
- Garment washed for softness
- Double-needle stitching throughout
- Side vents



To place your order, call (909) 338-2281

A partnership with Classic Images in Crestline

# TEAM WEAR

*Prices are for the sizes shown—  
larger sizes are available for  
an added cost*

## K420 Port Authority Heavyweight Cotton Pique Polo



**Price: \$19.98 + embroidery** [catalog](#)

Sizes: XS-XL

A favorite year after year, these polos are known for their exceptional range of colors, styles and sizes. The soft pique knit is shrink-resistant and easy to care for, so your group will always look its best.

- 7-ounce, 100% ring spun combed cotton heavyweight pique
- Garment washed for softness
- Double-needle stitching throughout

---

## L500LS Port Authority Ladies Silk Touch Long Sleeve Polo



**Price: \$21.98 + embroidery** [catalog](#)

Sizes: XS-XL

A favorite for years, our Silk Touch™ polo is soft, supple and easy to care for. The silky smooth pique knit resists wrinkles while the classic long sleeve style looks great on everyone.

- 5-ounce, 65/35 poly/cotton on pique
- Flat knit collar and hemmed sleeves
- Double-needle armhole seams and hem

---

## K500LS Port Authority Men's Silk Touch Long Sleeve Polo



**Price: \$21.98 + embroidery** [catalog](#)

Sizes: XS-XL

A favorite for years, our Silk Touch™ polo is soft, supple and easy to care for. The silky smooth pique knit resists wrinkles while the classic long sleeve style looks great on everyone.

- 5-ounce, 65/35 poly/cotton on pique
- Flat knit collar and cuffs
- Double-needle armhole seams and hem

---

## LPC450VLS Port & Company Ladies Long Sleeve Fan Favorite V-Neck Tee



**Price: \$9.98 + embroidery** [catalog](#)

Sizes: XS-XL

A tee that genuinely matches your favorite collegiate and professional sports team colors.

- 4.5-ounce, 100% ring spun cotton
- 90/10 cotton/poly (Athletic Heather)
- 50/50 cotton/poly (Dark Heather Grey)

# TEAM WEAR

Page 3

*Prices are for the sizes shown—  
larger sizes are available for  
an added cost*

## PC61LS Port & Company Long Sleeve Essential Tee



**Price: \$11.14 + embroidery** [catalog](#)

Sizes: S-XL

Nothing beats this traditional t-shirt in comfort, versatility and casual style.

- 6.1-ounce, 100% soft spun cotton

---

## L219 Port Authority Ladies Value Fleece Vest



**Price: \$23.98 + embroidery** [catalog](#)

Sizes: XS-XL

Ready for layering, this super soft, midweight fleece vest offers great warmth at a great price.

- 13.8-ounce, 100% polyester
- Twill-taped neck
- Reverse coil zipper
- Chin guard
- Bungee cord zipper pulls
- Tricot-lined armholes

---

## F219 Port Authority Value Fleece Vest



**Price: \$23.98 + embroidery** [catalog](#)

Sizes: XS-XL

Ready for layering, this super soft, midweight fleece vest offers great warmth at a great price.

- 13.8-ounce, 100% polyester
- Twill-taped neck
- Reverse coil zipper
- Chin guard
- Bungee cord zipper pulls
- Tricot-lined armholes

---

## F282 Sport-Tek Super Heavyweight Full-Zip Hooded Sweatshirt



**Price: \$43.98 + embroidery** [catalog](#)

Sizes: XS-XL

On or off the field, it's the most warmth you can get out of a sweatshirt. Weighing in at a hefty 12 ounces, our super heavyweight fleece is constructed for durability and comfort.

- 12-ounce, cross-grain 80/20 ring spun combed cotton/poly fleece
- Twill-taped neck
- Self-fabric hood lining
- Dyed-to-match drawcords
- Antique nickel-finished zipper
- 2x2 rib knit cuffs, hem and side gussets with spandex
- Front pouch pockets

# TEAM WEAR

Page 4

*Prices are for the sizes shown—  
 larger sizes are available for  
 an added cost*

## L217 Port Authority Ladies Value Fleece Jacket



**Price: \$27.98 + embroidery** [catalog](#)

Sizes: XS-XL

This exceptionally soft, midweight fleece jacket will keep you warm during everyday excursions and it's offered at an unbeatable price.

- 13.8-ounce, 100% polyester
- Twill-taped neck
- Reverse coil zipper
- Chin guard
- Bungee cord zipper pulls
- Front zippered pockets
- Open cuffs

## JST73 Sport-Tek Hooded Raglan Jacket



**Price: \$29.98 + embroidery** [catalog](#)

Sizes: XS-XL

A hit on or off the field, this water-repellent jacket is comfortable, stylish and quiet. Available for adults and youth, this favorite has a sporty hood and raglan sleeves. It also offers an unrestrictive fit and provide lightweight weather protection.

- 100% polyester shell
- 100% polyester jersey lining with mesh insets at gussets for added breathability
- Tag-free label
- Three-panel hood with drawcord and toggles
- Front slash pockets
- Articulated elbows for greater mobility
- Half elastic, half self-fabric cuffs for comfort
- Drawcord hem with toggle
- Port Pocket™ at left chest for easy embroidery access

## L719 Port Authority Ladies Active Hooded Soft Shell Jacket



**Price: \$49.98 + embroidery** [catalog](#)

Sizes: XS-XL

Enjoy active pursuits in this flexible, water-resistant, budget-friendly jacket that features a hood for true all-season performance.

- 100% polyester knit shell bonded to a water-resistant film insert / 100% polyester mesh interior
- 1000MM fabric waterproof rating / 1000G/M2 fabric breathability rating
- Longer length for additional coverage
- Three-panel hood with adjustable locking drawcord
- Reverse coil two-way zipper with front zippered pockets
- Elastic binding at cuffs
- Open drop tail hem

### DETAILS

The items shown are just a sampling of what is available for purchase from Classic Images.

Prices are subject to change based on the manufacturer. View the online [catalog](#) for additional items (please ask if you do not find the items you desire). Order directly from Mary at Classic Images Address: 23723 Rocky Dell, Crestline. Phone: (909) 338-2281.

Rim of the World Comfort Pets receives a yearly donation based on sales.



# TEAM WEAR

## SIZE CHARTS

SIZE CHARTS OFFER HELPFUL SIZE GUIDELINES.  
FOR MORE DETAILED INFORMATION, REQUEST A PRODUCT SPEC SHEET.

PORT AUTHORITY **PORT & COMPANY** **SPORT-TEK** **CornerStone** **RED HOUSE**

ADULT SIZES	XS	S	M	L	XL	2XL	3XL	4XL	5XL	6XL	7XL	8XL	9XL	10XL
REGULAR/TALL* CHEST	32-34	35-37	38-40	41-43	44-46	47-49	50-53	54-57	58-60	61-63	64-66	67-69	70-72	73-75
REGULAR/TALL* NECK	14½-15	15-15½	15½-16	16-16½	16½-17	17-17½	17½-18	18-18½	18½-19	19-19½	19½-20¼	20¼-20¾	20¾-21¼	21¼-21¾
REGULAR/TALL* LONG SLEEVE ARM LENGTH	30½	32	34	35	36½	37½	38½	39½	40½	41½	41½	41½	41½	41½
WAIST	26-28	29-31	32-34	35-37	38-40	41-43	44-47	48-51	52-54	55-57	58-60	61-63	64-66	67-69

\*Tall styles are up to 2" longer than regular sizes in body and sleeve length. Tall sizes: LT-4XLT.

LADIES SIZES	XS	S	M	L	XL	XXL	3XL	4XL	5XL	6XL
SIZE	2	4/6	8/10	12/14	16/18	20/22	24/26	28/30	32/34	36/38
BUST	32-34	35-36	37-38	39-41	42-44	45-47	48-51	52-55	56-59	60-63
WAIST	24-26	27-28	29-30	31-33	34-36	37-39	40-43	44-47	48-51	52-55
HIP	34-36	37-38	39-40	41-43	44-46	47-49	50-53	54-57	58-61	62-65

YOUTH SIZES	XS	S	M	L	XL
SIZE	4	6/8	10/12	14/16	18/20
CHEST	25-26	26-28	28-30	30-32	32-34
WAIST	24-25	25-26	26-27	27-28	28-31

INFANT SIZES	6M	12M	18M
(APPROX.) WEIGHT (LBS)	12-17	17-22	22-27
(APPROX.) LENGTH (IN)	23-27	27-28	29-31

TODDLER SIZES	2T	3T	4T
(APPROX.) WEIGHT (LBS)	29-33	33-36	36-40
(APPROX.) HEIGHT (IN)	32-36	36-39	39-42



Kid Options Too!



Consider other ways to show  
your team spirit!

